

54BS517 Cozy Nook Driver

TONKA *TM

68139913 aAa: 531 Beta Cas: A1A2 Kappa Casein: BB
Born: 3/1/2012

Proven Sires

DRIVER x JOEL x PRONTO

12/2020 G-CDCB PERFORMANCE			
MILK +313	FAT +24 / +0.05%	PROTEIN +11 / 0.00%	PPR 78
PROD. 92%R 125 DTRS/55 HRDS TYPE 88%R			
PL +2.3	UDC -0.02	SCS 2.97	TYPE -0.10
Milking Speed 106		Conception (SCR) N/A	
Cow Livability +3.1			
CE 2.8%	NM\$ \$232	DPR +1.3	MOB -0.2

MATING GUIDE	
+ Strength & Power + Udder Cleft & Depth + Feet & Legs	- Pin Width
Rear Legs- Ideal & Rump Angle- Level	

Sire: Hilltop Acres H Driver ET *TM
Dam: Cozy Nook Joel Tipper ET "VG-89"
5-02 322d 2x 28,920 4.2 1,211 3.7 1,056
MGS: Red Brae Daa Ace Joel *TM
MGD: Cozy Nook Pronto Twilight "4E-92"
4-01 365d 2x 39,680 4.0 1,569 3.3 1,303

	G-CDCB	-2	-1	0	1	2
Stature	-0.20S					
Strength	0.60S					
Dairy Form	0.200					
Rump Angle	-0.20H					
Thurl Width	-0.20N					
Foot Angle	0.20S					
R Legs - Side View	0.30C					
R Legs - Rear View	-0.30H					
Fore Attachment	-0.80L					
Rear Udder Height	-0.40L					
Rear Udder Width	-0.10N					
Udder Depth	-0.30D					
Udder Cleft	1.00S					
Teat Placement	0.70C					
Teat Length	0.70L					
Udder Composite	-0.02					



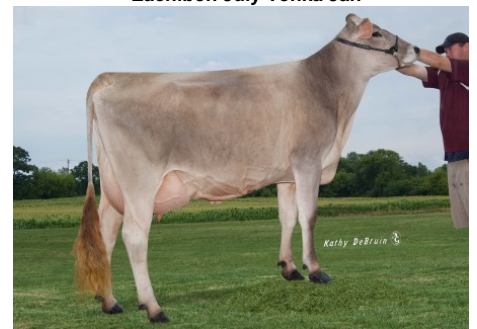
Cozy Nook Tonka Abbralee



54BS517 TONKA



Eachibon July Tonka Jan



Dam: Cozy Nook Joel Tipper ET 'VG 89'

NEW GENERATION GENETICS

www.brownswiss.com

(920) 568-0554

E-mail: info@brownswiss.com